

Financial Inclusion (FI)

# EMV CASH Ingenico Micro ATM implementation on Manual

June, 2020

State Bank of India

---

## INGENICO APPLICATION INSTALLATION STEPS USING LLT

### 1 Pre-requisites:

1. Ingenico device should be connected to PC.
2. LLT tool should be available in PC. If not then LLT tool and Ingenico Application for YONO Cash will be available in Report Menu → Download File Menu → YONO CASH DRIVERS → Click on Ingenico Folder to download the Peri-service, Device Application, LLT tool.
3. Right click on EMV\_INGENICO.zip and click on extract option to download the LLT\_setup.exe, PERISERVICE, EMV\_YONO\_Package\_9.32\_Real\_All\_capks\_21042020 files in the same location.
4. Please follow the steps mentioned in document to install the LLT tool

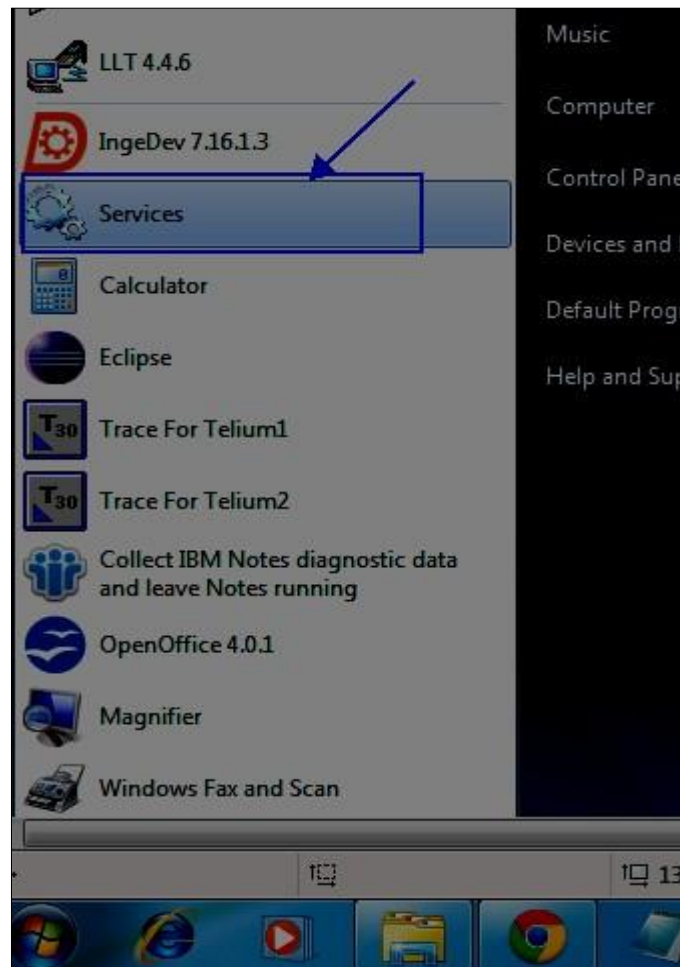


**LLT USER GUIDE.pdf**

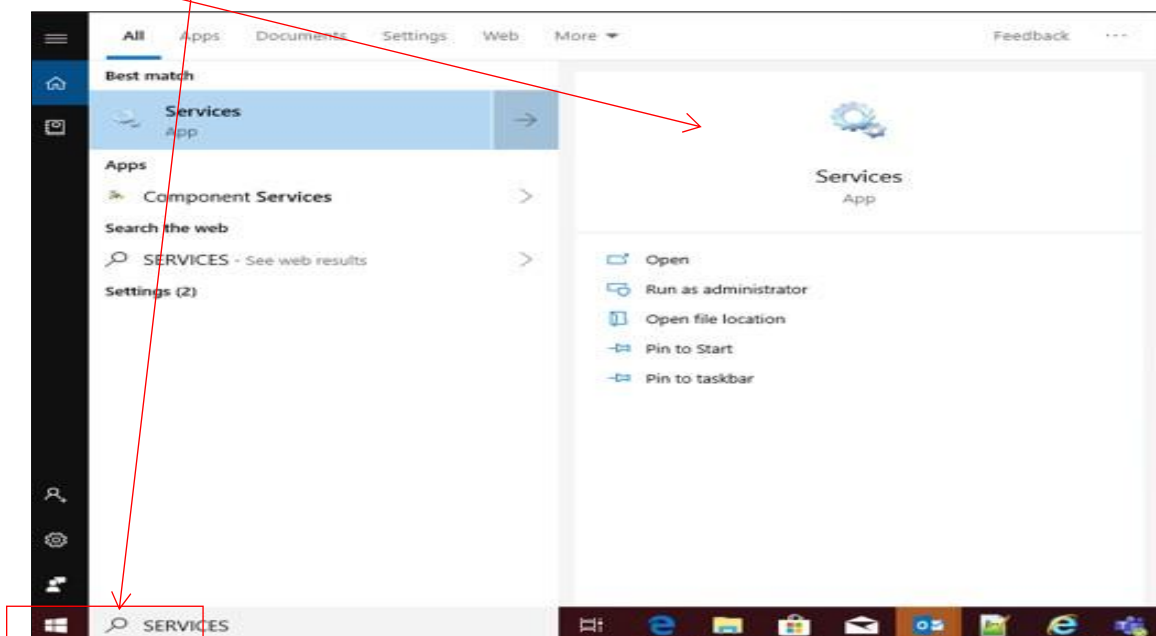
5. Go to extracted folder where periservice is placed. Double click on PeriServiceSetup for installation of periservice.

### 2 The detailed steps to install applications in Ingenico device through LLT are listed below.

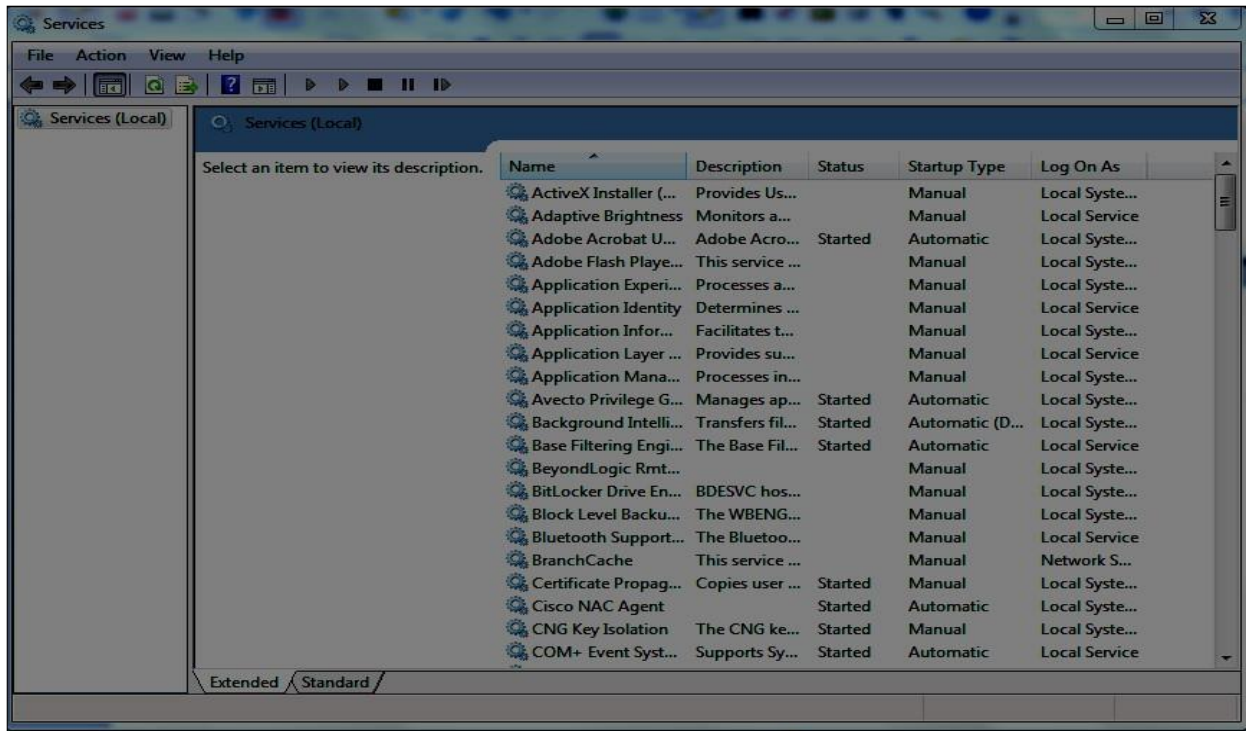
1. Telephony services need to be started.
2. Click on Start menu -> Services



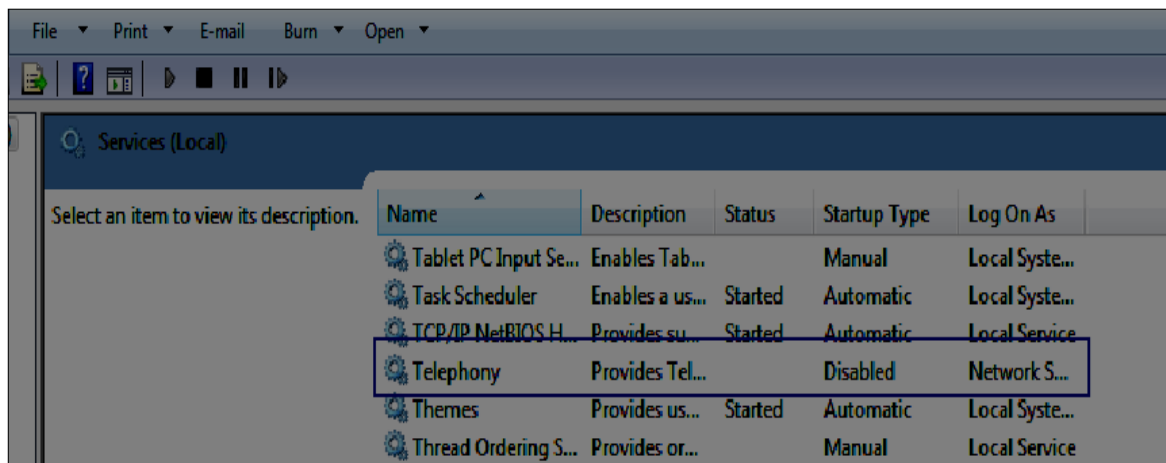
3. Or Type SERVICES in Search Option of Windows Start Button and Click on Services Icon.



4. The following (Services)window will be displayed to user to start Telephony service.

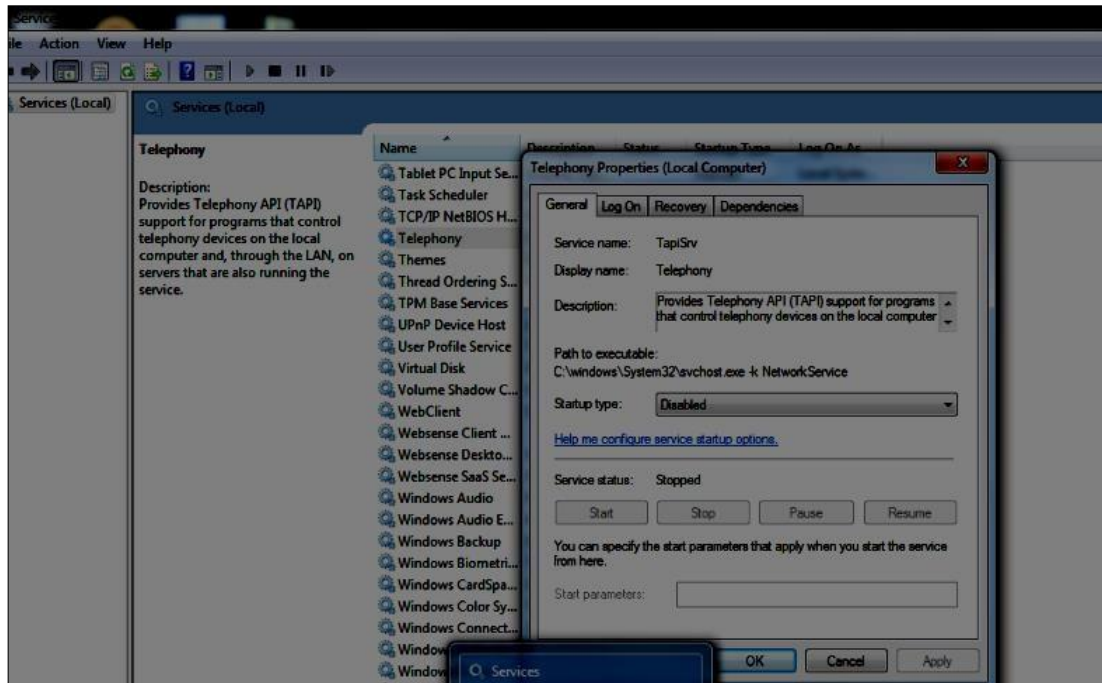


5. Select the Telephony services from the above window and double click on it to open.

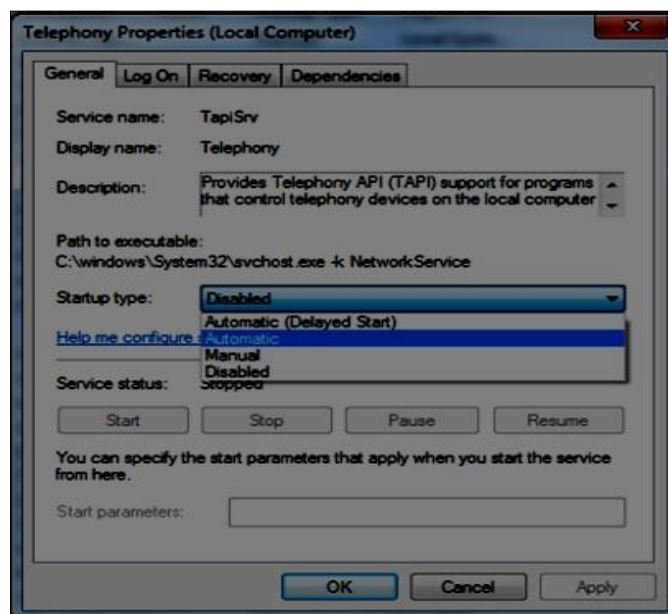


**\*\* Initially the Telephony services may be Disabled/Automatic.**

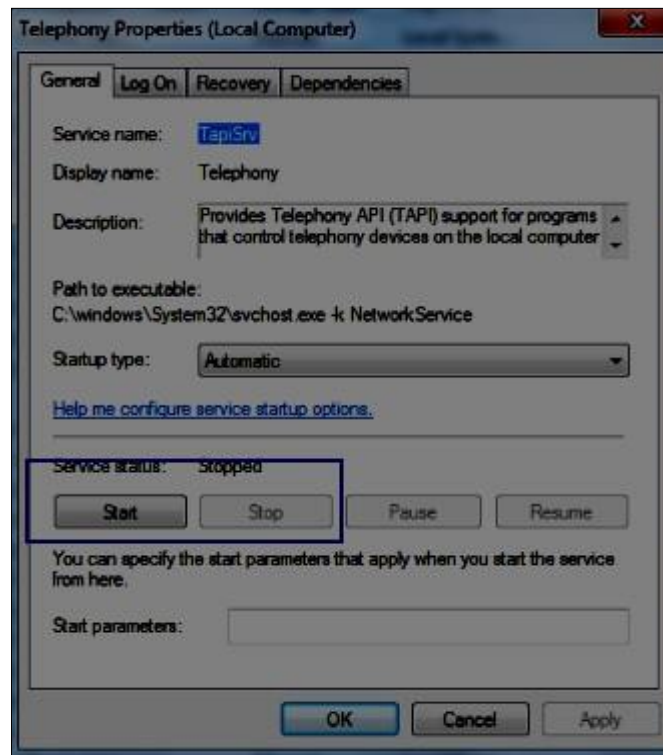
6. Click on Telephony services (Double click). It will show the window to change the Start-up Type & To Start service.



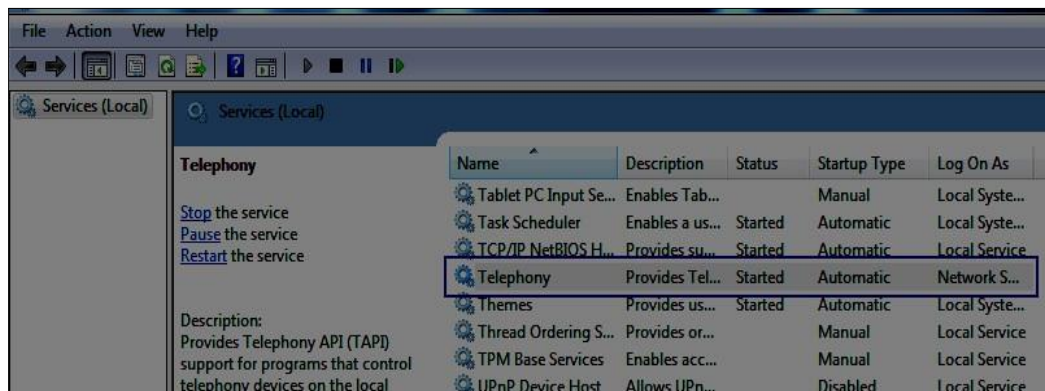
7. Select the Start-up Type as Automatic and click on Apply button.



8. Once clicked on apply the Start button will be enabled to click.



9. Once clicked on start the Telephony service will get started.



10. After starting Telephony services, we can connect the device trough LLT. Further steps are mentioned below.

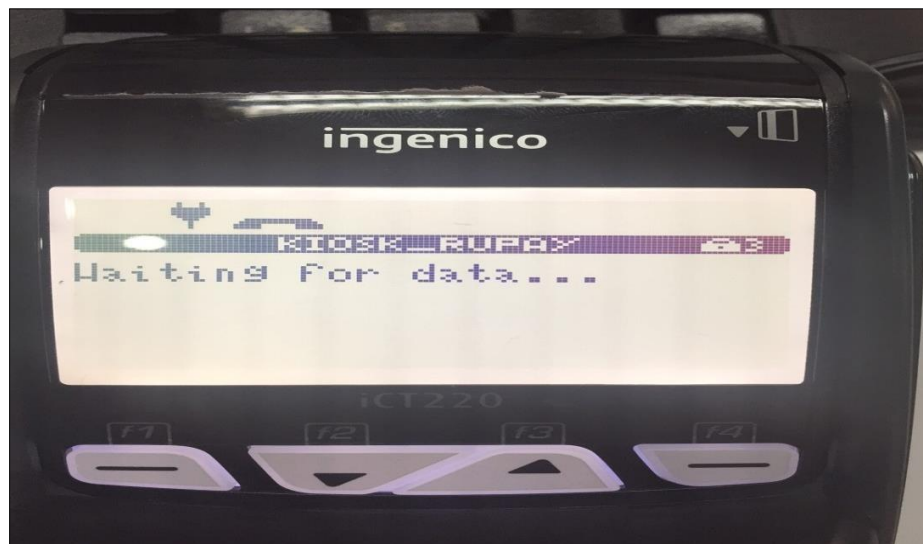


## LLT tool usage steps:

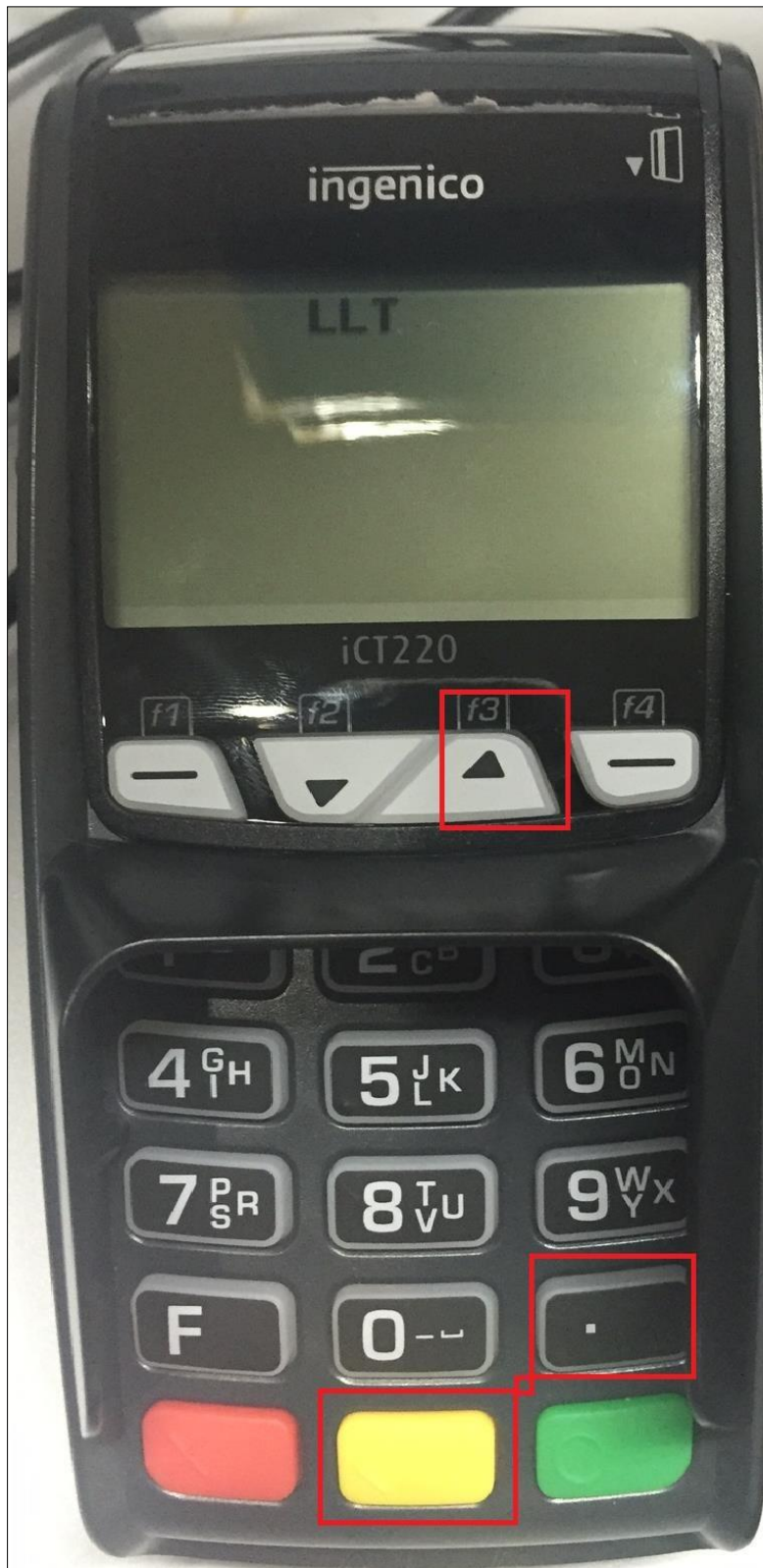
1. Change the device mode to LLT (if current mode is debug). Please follow the below mentioned steps.
2. Click on LLT (Local Loading Tool) icon to start the application.



3. Connect and power on Ingenico device. **Press “F” key followed by “0” or Green button.** Device screen should show **“waiting for data...” “status.**



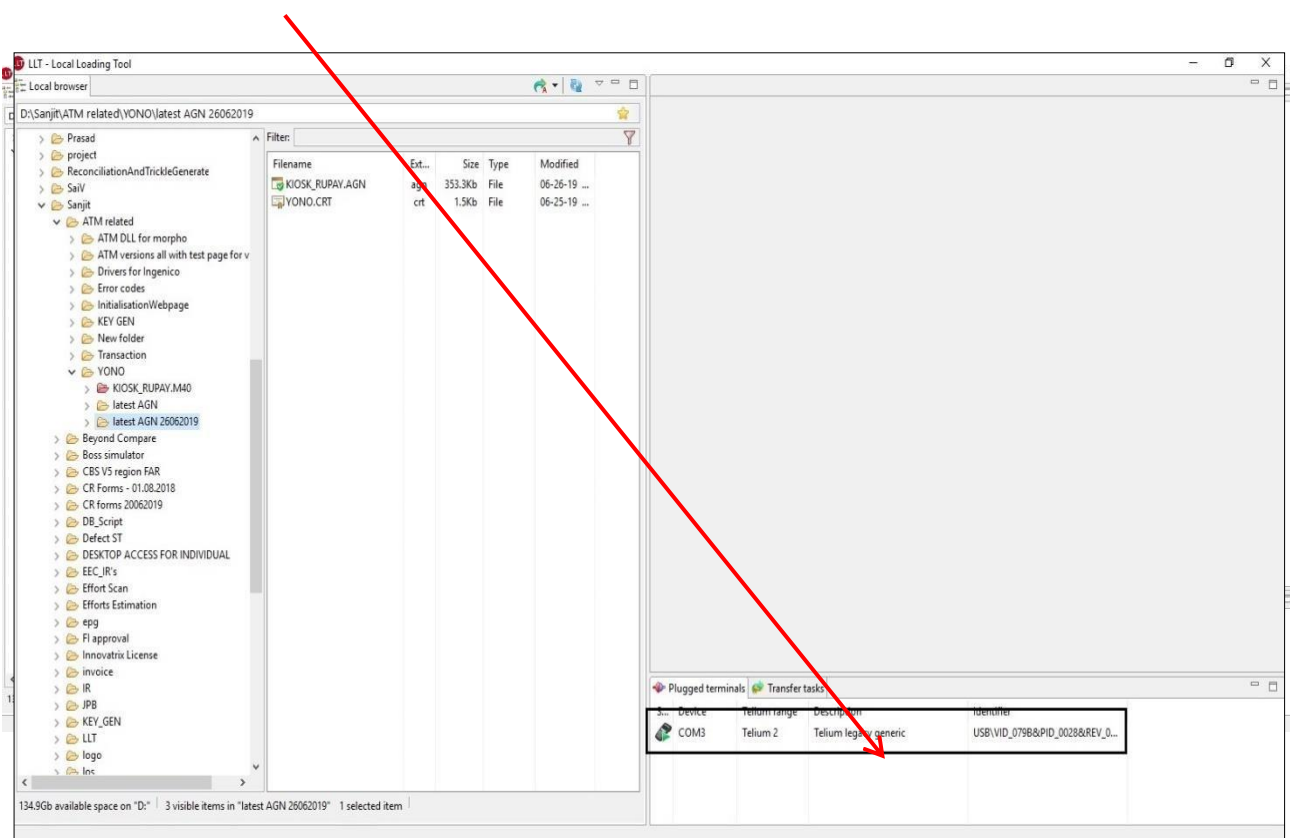
4. Now put the device in LLT mode by pressing “Yellow” and “.” button together, after that keep “f3” button pressed. Now on device screen you will show “LLT” as follows.





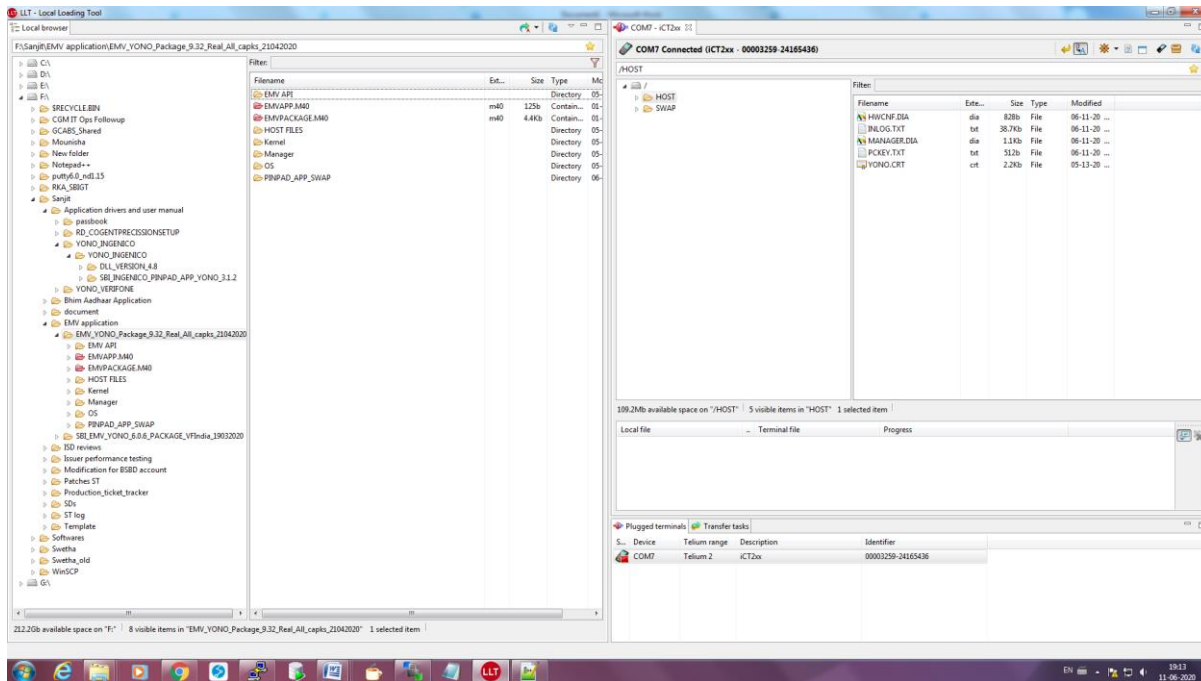


5. Open the LLT tool in PC.

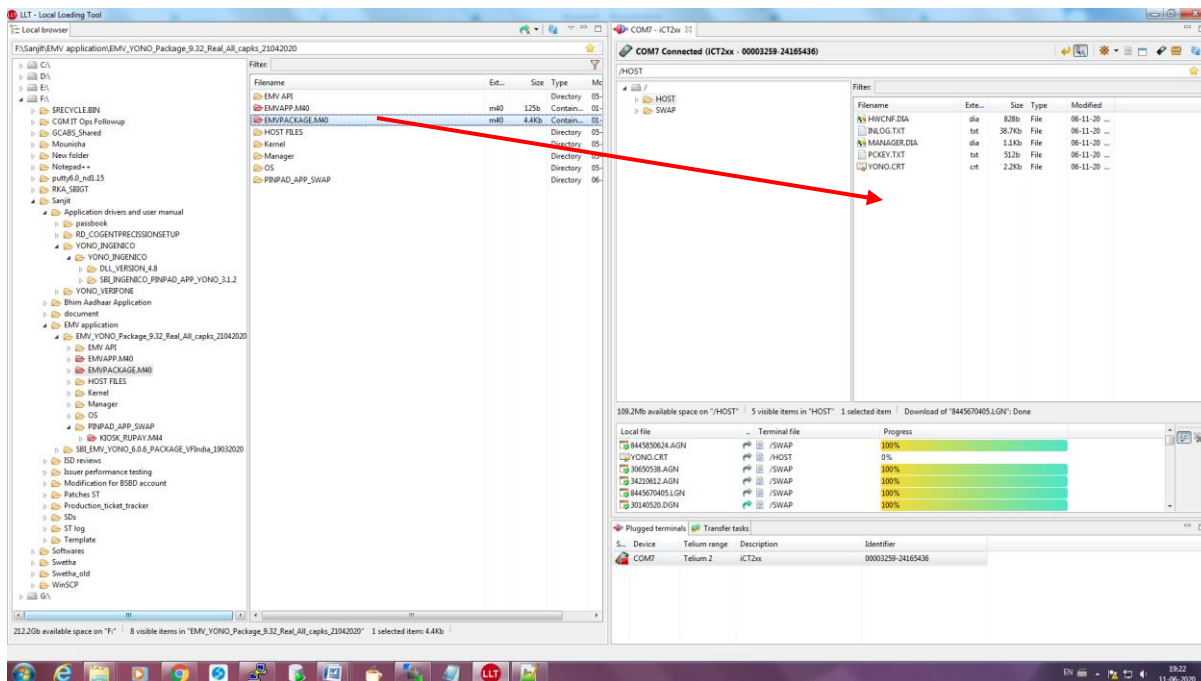


Double click on the black highlighted button to connect the device through LLT.

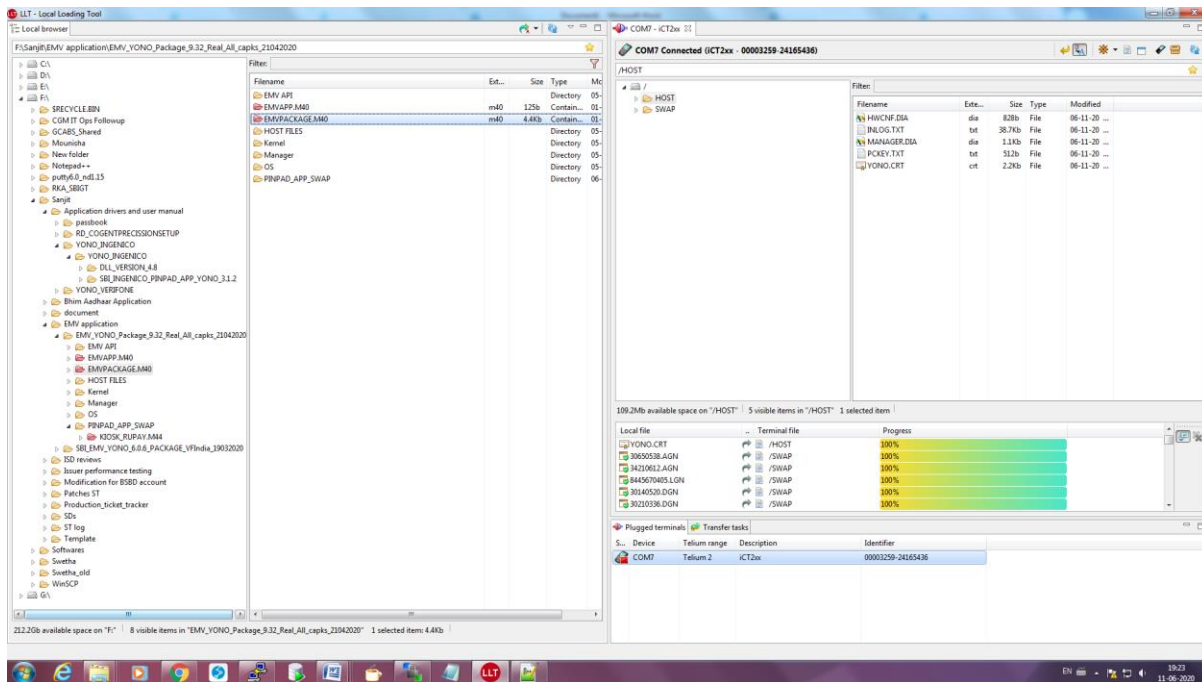
6. Once device connected, user can view the files in device and in PC path, user need to open application path as per below Screenshot.



7. Please Drag on EMV\_PACKAGE.M40 file and place on right side to HOST or SWAP folder.



## 8. Please Wait until the all file loading completed.



## 9. Once copied double click anywhere in highlighted black screen to disconnect the device.

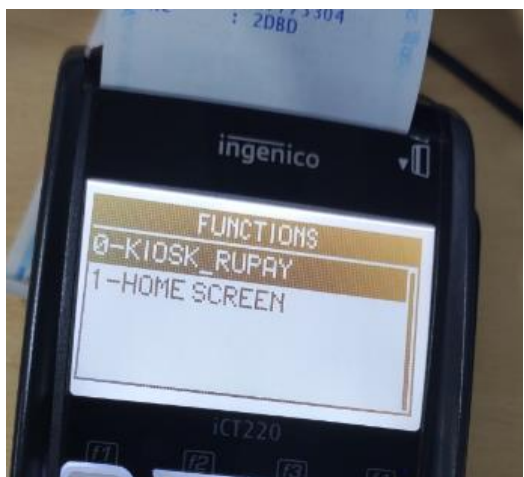


## 10. Please follow the below steps before doing transactions.

Press F to continue.



11. Press '0' to go to final screen.



12. This will be the final page before transaction.



=====Thank YOU=====

